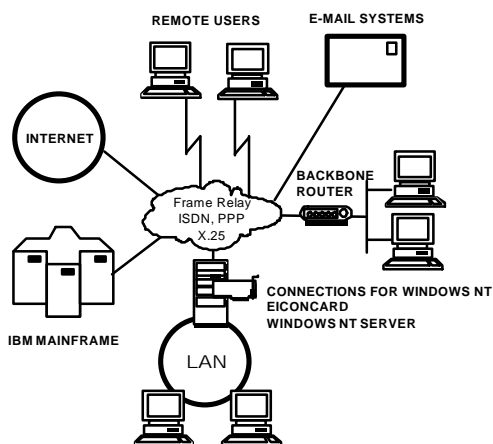


WANIC drivers included in Windows NT v4.0 & Connections for Windows NT V4R1

Connections for Windows NT is an add-on product supplying advanced WAN access capabilities for Windows NT. In addition to IP/IPX routing and remote access, supplied as basic WAN services with Windows NT v4.0, Connections for Windows NT includes full compression for Microsoft and major backbone routers, WAN access to LAN clients through either Telnet or a WAN gateway (ECLAN), a 32-bit WAN application development toolkit and comprehensive network management. This product provides the highest level of flexibility, integration and manageability for Windows NT WAN connectivity.

The emerging Windows NT application servers require tighter integration with enterprise communications. An integrated PC-based solution will reduce total cost of ownership by offering flexibility, adaptation to changing technologies and tariffs and by simplifying system and network management. Connections for Windows NT and the Eicon WAN interface card (WANIC) offers the most versatile Windows NT PC-integrated WAN solution.

Eicon and Microsoft continue to work together in an effort to ensure that Windows NT customers remain recipients of cutting-edge and scalable technology. Eicon continues to refine the power and speed of its WAN hardware and software. Through seamless integration with BackOffice applications, network administrators achieve an easy-to-implement, cost-effective branch office solution, protecting their investment.



Eicon Technology provides both basic and advanced WAN access capabilities

■ Product Highlights

WANIC drivers in Windows NT

- Integrated WAN platform
- Integrated IP/IPX routing
- Internet access
- Backbone interoperability

Connections for Windows NT

- All of the above plus:
- Remote management
- Compression
- 32-bit WAN application toolkit
- LAN Client WAN Gateway

What's in it for network managers?

Network managers implementing wide area networking solutions are faced with several key concerns. Solutions must be flexible and easily adaptable to meet the diverse connectivity requirements of the remote locations. These solutions must also respond to budgetary issues, serving to minimize associated costs.

Connections for Windows NT minimizes implementation costs by integrating with Windows NT technology already familiar to network managers and reduces networking costs via specific bandwidth optimization features. Protection of investment is assured by virtue of a PC-based architecture which permits features to be easily added with hardware/software upgrades.

<i>Feature</i>	<i>Benefit</i>
----------------	----------------

Eicon's WANIC drivers included in Windows NT v4.0

Single, integrated WAN solution	Eicon's WANIC drivers, included in Windows NT v4.0, form the only solution to provide wide area networking options for Windows NT, SNA Server, Exchange Server, Systems Management Server and SQL Server in a single, integrated solution. With Connections for Windows NT, users get comprehensive and flexible WAN connectivity for Windows NT and all of its server applications.
--	--

Integrated IP/IPX routing	Eicon's WANIC drivers, included in Windows NT v4.0, extend Microsoft's IP and IPX stacks across a wide area network via Frame Relay, ISDN, X.25 or PPP. Integrated with the Microsoft Windows NT NOS, Connections for Windows NT takes advantage of its tools, services and security features. In contrast, a "box" solution acts as a totally distinct entity with no relationship to the LAN network operating system.
----------------------------------	--

Internet access	Eicon's WANIC drivers, included in Windows NT v4.0, provide users with access to the Internet. By using the IP routing functionality users can gain access to the Internet whether they be in the office or on the road. Corporate LAN users can gain access to the Internet over a variety of WAN protocols including Frame Relay, ISDN, X.25 or Point-to-Point Protocol. Regardless of which of these WAN protocols a corporation is currently using, or will use in the future, Eicon's WANIC drivers contained in Windows NT v4.0 will support them, providing the corporation with protection of investment. By installing Windows NT v4.0 containing Eicon's drivers on the LAN and connecting it to an X.25 service provider, mobile users can dial the local asynchronous access point of the X.25 network using their regular modem and have access to all the same services, including the Internet, as if they were in the office.
------------------------	---

Backbone interoperability

Eicon's WANIC drivers, included in Windows NT v4.0, are fully compatible and interoperable with backbone routers from vendors, including Cisco, Bay Networks and 3Com.. End-users can easily and cost-effectively integrate into the corporate network backbone, as they are no longer restricted to a single vendor's product and support offering.

Connections for Windows NT

All of the above

Connections for Windows NT contains all of the basic WAN capabilities that are included in Windows NT v4.0 and has the following value-added features:

Compression

Connections for Windows NT has additional compression support for Cisco, Bay Networks and Microsoft. End-users can easily and cost-effectively integrate into the corporate network backbone, as they are no longer restricted to a single vendor's product and support offering.

Remote management

Connections for Windows NT includes an SNMP management console used for remote monitoring and configuring, minimizing management costs.

32-bit WAN application toolkit

Connections for Windows NT contains a 32-bit WAN application toolkit which allows developers to build custom WIN 32 applications to connect to an X.25 network and send and receive data over an EiconCard.

LAN Client WAN Gateway (ECLAN Server)Connections for Windows NT allows concurrent multiple LAN users using IP, IPX and NetBEUI protocols to share the WAN card resources. The ECLAN WAN gateway supports an unlimited number of concurrent LAN sessions. ECLAN Server runs unmodified on a LAN workstation or on a communications server.

Eicon Technology Corporation

Tel.: (514) 745-5500
Fax: (514) 745-5588

In the United States, Canada, Latin America:

Tel.: 1-800-80-EICON
(214) 239-3270
Fax: (214) 239-3304

In Europe, Middle East, Africa:

Tel.: (44) 181 967-8000
Fax: (44) 181 967-8050

In Australia, New Zealand, Asia:

Tel.: (61) 2 9919-7200
Fax: (61) 2 9929-6300

Internet:

North America: sales@eicon.com
Europe: sales.europe@eicon.com
Asia Pacific: sales.asiapac@eicon.com
Worldwide Web: http://www.eicon.com/

